



FIELD INSTRUCTION FOR MULLING SIDELITE TO ENTRY DOOR

IMPORTANT NOTES BEFORE YOU BEGIN

This document is to assist with field mulling a sidelite(s) to a single, French, or combination entry door. This process must be completed outside of opening.

THE FOLLOWING PROVISIONS WILL SHIP FROM THE FACTORY AS NOTED:

- All Brickmold will ship loose.
- Entry Door jamb cladding and mullion cover(s) will ship loose.
- Sidelite jamb cladding will have a trim and clip system applied.
- Mullion Build-Up will be applied to the entry door jamb (if applicable).

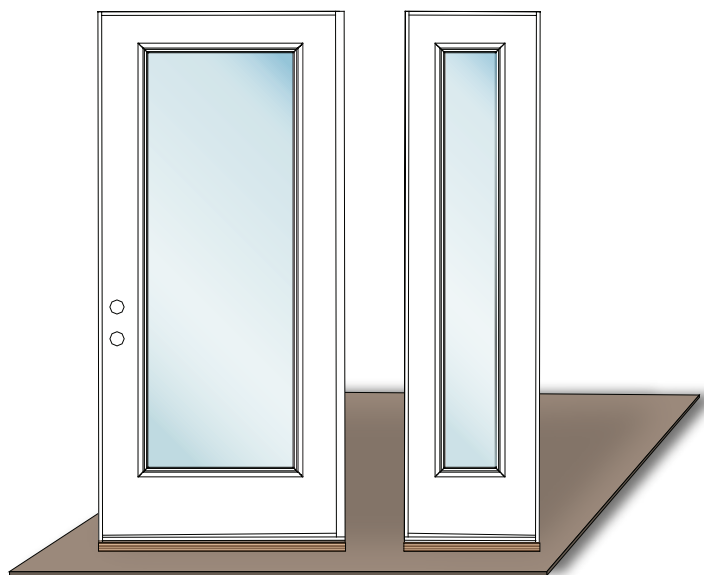
TOOLS & MATERIALS YOU WILL NEED:

- Clamps
- 2" Exterior Decking Screws
- 2½" Exterior Decking Screws
- Drill & Drill Bits
- High Quality Silicone Caulking in accordance with ASTM C 920, Class 25 & Caulking Gun for mulling and mull cover



Read the following instructions carefully before starting installation. Product warranty does not cover damages resulting from improper installation.

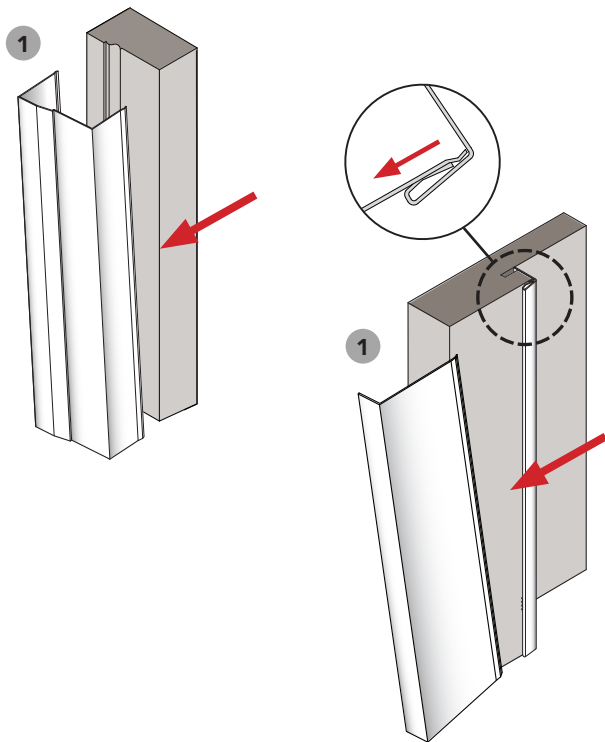
A. INSPECT ENTRY DOOR AND SIDELITE(S)



(Figure A.1)

- 1 Unpack and inspect the new door and sidelite(s) for any material damages. Scan the product's packaging QR Code label to access ProVia's **After Sale Product Support** to enter a request and post pictures to order, or call Customer Service.
- 2 Prepare a flat solid surface large enough to accommodate entry door and sidelite(s). Cover surface with product's shipping cardboard to protect door unit. (Figure A.1)
- 3 Confirm overall unit size with proposed opening.

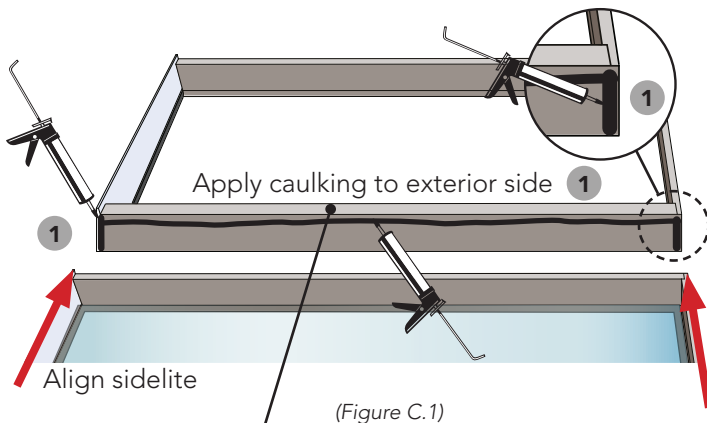
B. PREPARATION



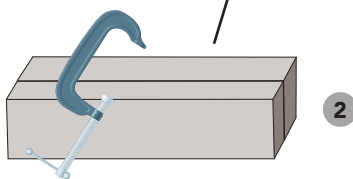
(Figure B.1)

- 1 Remove the brickmold cladding from the brickmold. Then, remove all jamb cladding. *Note, the jamb cladding is attached with a clip system. Refer to Detail. (Figure B.1)*
- 2 Support door unit in the upright position. Remove the shipping bracket's jamb side screws. **BEFORE OPENING THE DOOR**, use the handle set holes to lift and un-weight the door slab, then open. Remove bracket and discard. **Note, shipping bracket will damage the jamb if door is opened without lifting to un-weight.**
- 3 Open door and remove all hinges from the jamb. Carefully set door slab(s) aside.
- 4 Lay frame and sidelite(s) flat on prepared surface in the order of assembly with the **EXTERIOR** side **UP**.

C. MULL SIDELITE(S) TO ENTRY DOOR UNIT



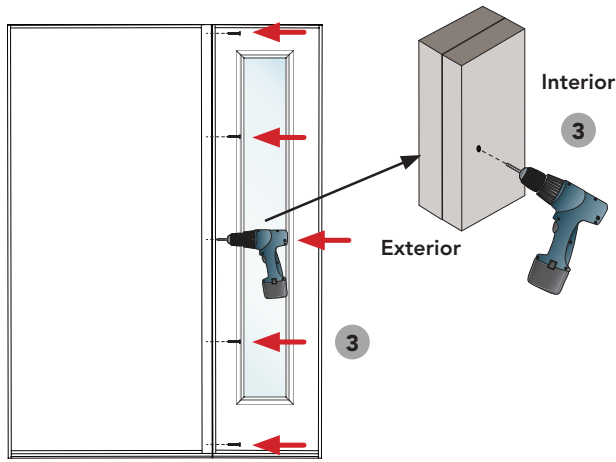
(Figure C.1)



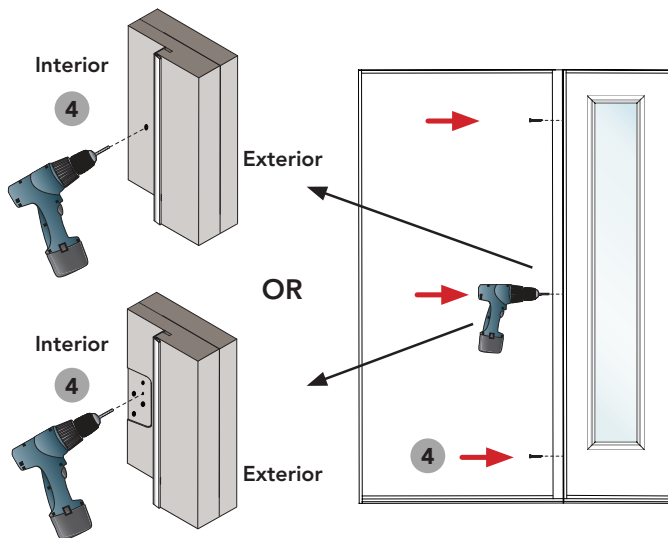
(Figure C.2)

- 1 Apply a continuous bead of caulking for the full length of the jamb side to receive sidelite. Place caulking towards exterior side of jamb width. To fully seal, apply caulking to the end of the threshold and head jamb for width of the unit, as shown. (Figure C.1)
- 2 Align the sidelite with the entry door frame. Be sure the head and sill are even. Place clamps along the mull joint to make sure joint is fully compressed and sealed. (Figure C.2)

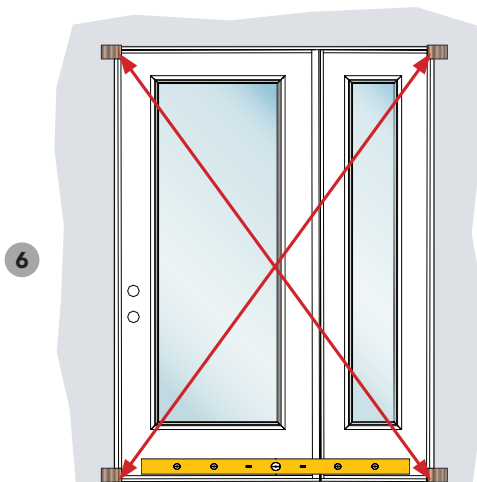
C. MULL SIDELITE(S) TO ENTRY DOOR UNIT



(Figure C.1)



(Figure C.2)



(Figure C.3)

- 3 Along the mull joint, from the sidelite jamb side and to the **EXTERIOR**, pre-drill (5) pilot holes. Locate holes 1-½" from top and bottom of the jamb then equally space (3 - 5) additional pilot holes between. Install 2" decking screws to secure mull joint. *Note, if unit has a mull build-up, increase screw length accordingly. (Figure C.1)*
- 4 Along the mull joint, from the pocket of the door jamb and **CENTERED** on width of the rabbit, pre-drill (3) pilot holes and secure with 2½" decking screws. *Note, if unit has a mull build-up, increase screw length accordingly. **Locate screws as noted below:***

For a sidelite attached to the HINGE SIDE:

Place a screw inside the hinge mortise at each hinge location. **BE SURE** the screw location does NOT interfere with the hinge screws. (Figure C.2)

For a sidelite attached to the STRIKE SIDE:

Place a screw inside the mortise at the deadbolt location and a screw above and below the deadbolt location. *Note, to locate screw at deadbolt, place strike plate in factory mortise. Mark location of strike plate installation screws so to not interfere with decking screw. (Figure C.2)*

- 5 Place a round adhesive screw cover (included) over all exposed screws. *Note, the screw covers are the only coverage for top/bottom screws on strike-side, **BE SURE** to take care when pre-drilling and fastening.*

! IMPORTANT! Screws MUST BE installed straight into jamb. Failure to do so will result in damage to sidelite slab face.

- 6 Stand door and sidelite unit upright and set into opening. Check to make sure the sill is flat and the unit is square. Measure corner to corner, each side. *It is recommended to add a temporary wood block in each corner to substitute as brickmold, holding unit in place. (Figure C.3)*
- 7 Re-install door slab(s).

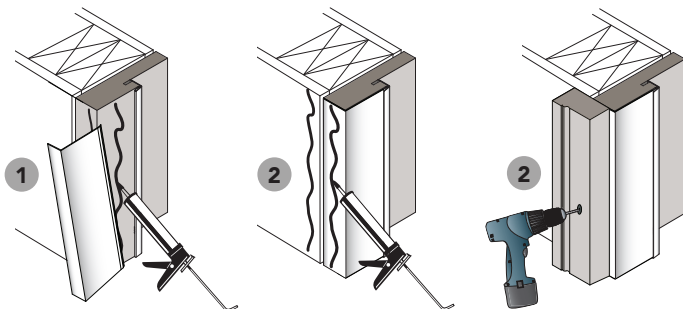


Complete full install by referring to the main product installation instruction. Return to this instruction to then complete the brickmold and cladding installation, refer to Section D.

D. INSTALL BRICKMOLD AND CLADDING

JAMB CLADDING AND BRICKMOLD

Apply jamb cladding and install loose brickmold



(Figure D.1)



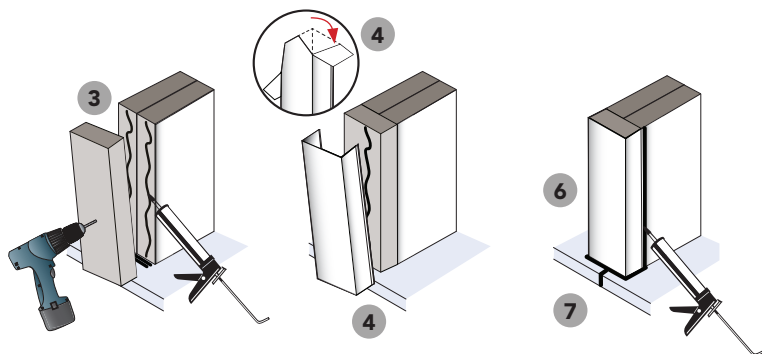
For standard loose cladding, refer to the QR Code for additional instruction.
(Tap or scan)



- 1 Apply a bead of caulking to the face of each jamb side in order to adhere cladding. Then install each jamb cladding piece using the clip system. (Fig. D.1)
- 2 For brickmold, apply a bead of caulking to the exterior face of frame, all sides. Apply a second bead of caulk to the exterior sheathing and close to frame. Then install all brickmold with a $\frac{7}{16}$ " reveal. Secure in place using the proper length screws every 24". (Figure D.1)

MULL POST AND CLADDING

Apply post and cover

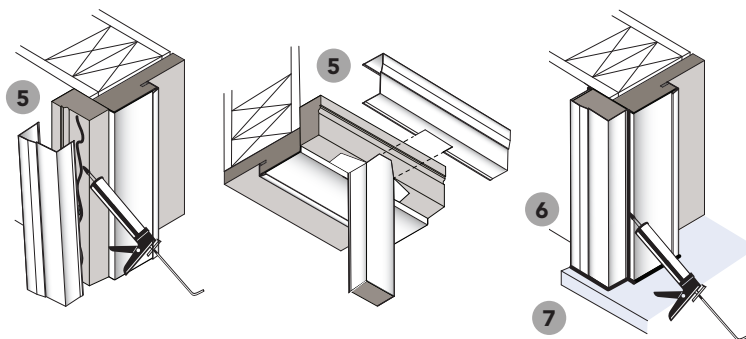


(Figure D.2)

- 3 Measure from the threshold to the head brickmold. Use measurement to cut **TOP** of mull post to length, *DO NOT* cut the protective composite on bottom of post. Apply a bead of caulking for the full length of the mull joint and apply a bed of caulking along threshold joint. Set post and secure in place using the proper length screws every 24". (Figure D.2)
- 4 Measure, cut, and install mull cover. Extend the face of the mull cover cladding up onto the head brickmold then cut and bend ears on each side. (Figure D.2)
- 5 Apply a bead of caulking to the face of each brickmold then install cladding. Note, the head brickmold cladding will require a field notch to properly fit around mull post. (Figure D.3)

BRICKMOLD CLADDING

Install brickmold cladding and seal ALL cladding joints



(Figure D.3)

- 6 Caulk around ALL cladding joints. Be sure to apply caulking around perimeter where cladding meets exterior sheathing/material. (Figure D.2 & D.3)
- 7 Caulk along the entire joint of threshold, where the jamb and brickmold meet the threshold. Be sure threshold joint at mull post is fully caulked. (Figure D.2 & D.3)

Visit our Installation Support
Homepage by **SCANNING** or
TAPPING the QR Code

