



UPDATE INSTRUCTIONS FOR ENDURE PATIO DISPLAY WITH ACCUVENT

Tools & Materials You Will Need:

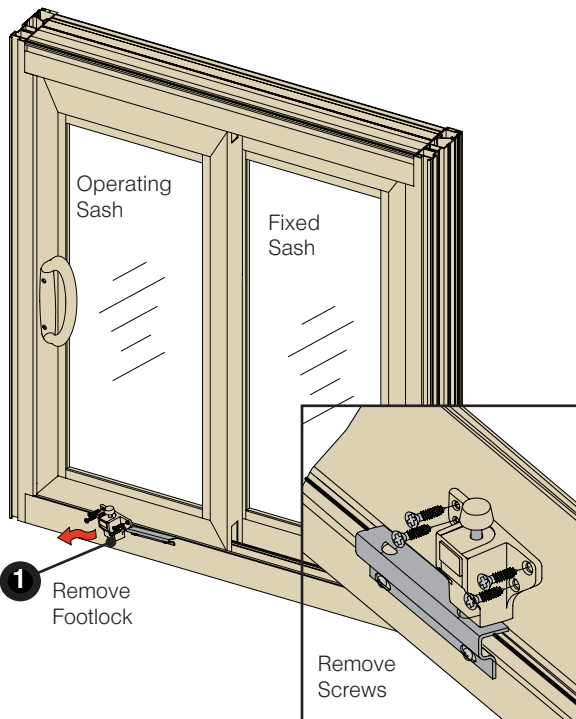
- Phillips Screwdriver
- Flathead Screwdriver

You will receive a new active patio sash with AccuVent System installed. Follow the instructions below to update your current patio display door.

REMEMBER TO ALWAYS
WEAR THE APPROPRIATE



PERSONAL PROTECTIVE
EQUIPMENT



1 REMOVE FOOTLOCK

Step 1- Using a #2 Phillips Screwdriver, remove four (4) screws from footlock on active panel and lay aside. You will need to remount footlock on new sash.

Note: You will need to remove the footlock only. Do not remove the metal keeper.

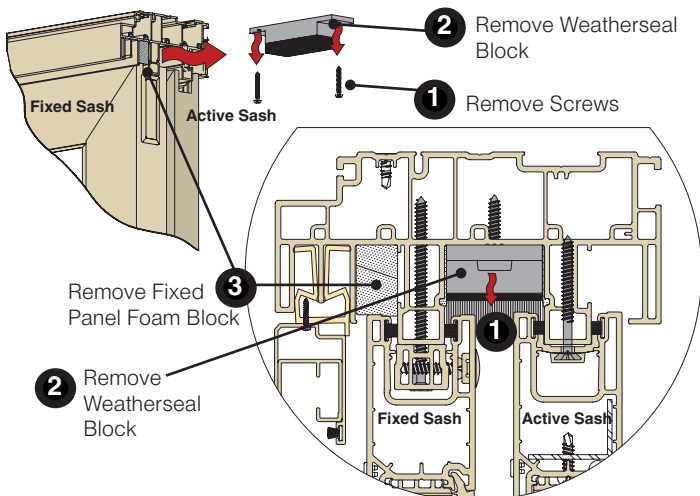
2 REMOVE WEATHERSEAL BLOCK

Step 1- Using a #2 Phillips head screwdriver, remove two (2) weatherseal block screws.

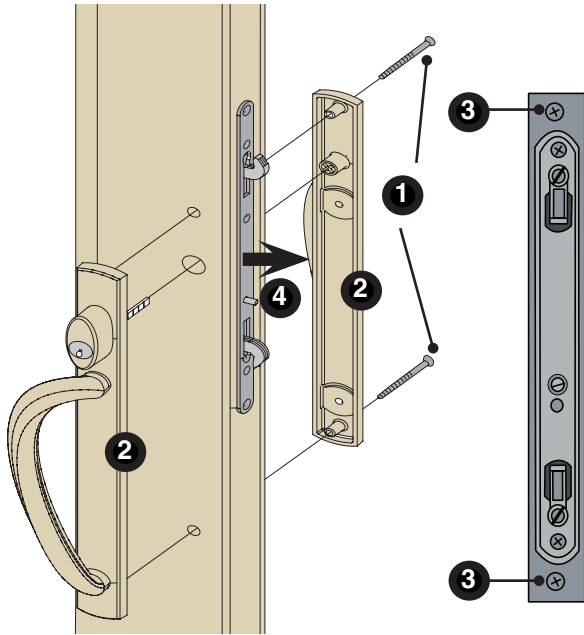
Step 2- Move active sash to open position and slide weatherseal block out of active sash channel. Lay screws and block aside.

Step 3- Remove foam block above fixed sash and lay aside.

Weatherseal block, screws and foam block will be re-installed later.



3 REMOVE HANDLESET



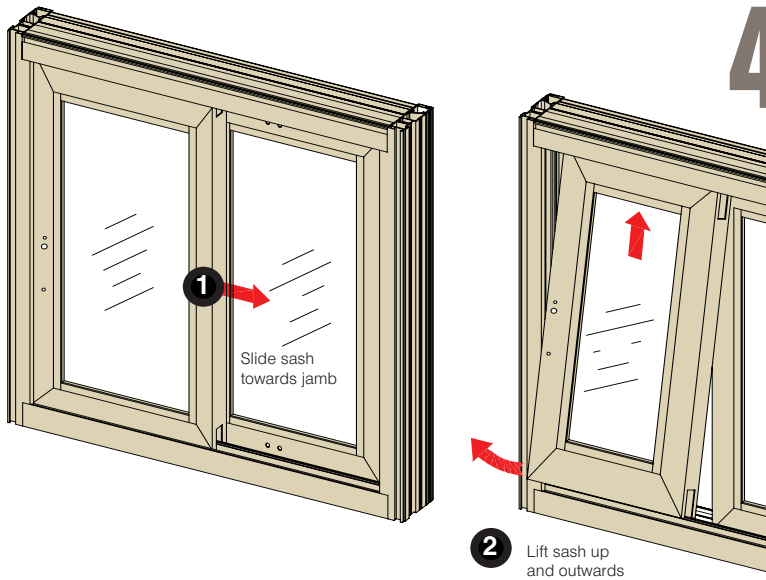
Step 1- While holding onto outside handle, remove two (2) #8-32 x 2 1/8" Phillips Oval Head screws from inside handleset using a Phillips screwdriver.

Step 2- Remove inside and outside lever and set aside.

Step 3- Remove two (2) screws located on top and bottom of mortise lock body.

Step 4- Remove mortise lock body and set aside.

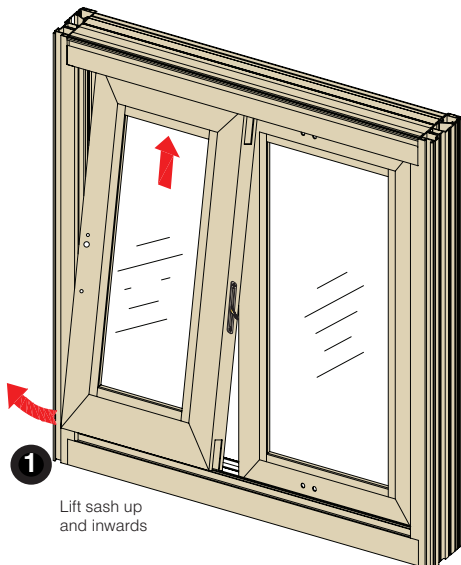
4 REMOVE ACTIVE SASH



Step 1- Slide operating sash open towards the jamb.

Step 2- Lift active sash up and tilt bottom outward towards the inside.

5 RE-INSTALL ACTIVE SASH WITH ACCUVENT

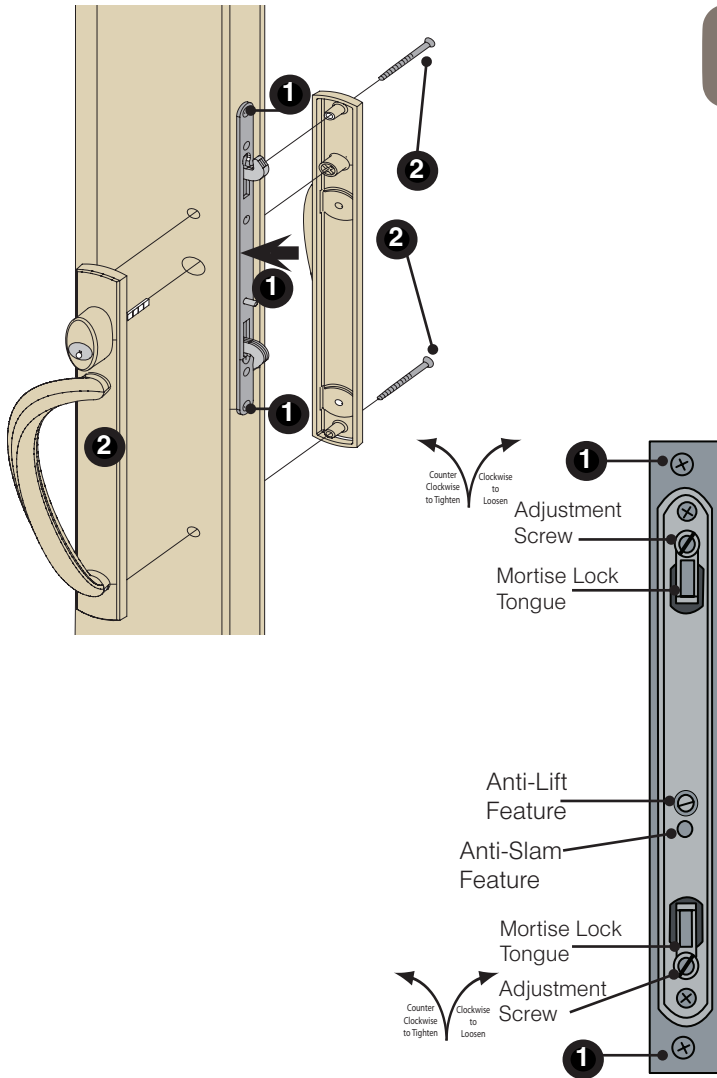


Step 1- Insert new sash with AccuVent Lock by lifting sash up and tilt bottom inwards.

6 RE-INSTALL HANDLESET

Step 1- Re-install mortise lock body by reversing steps from Step 3.

Step 2- Re-install inside and outside lever by reversing steps from Step 3.

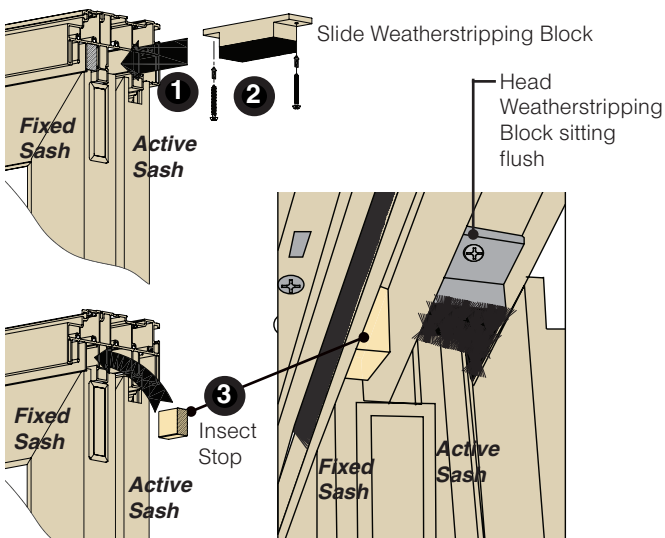


7 RE-INSTALL WEATHERSEAL BLOCK

Step 1- Move active sash to the open position and slide weatherseal block back into the operating sash channel.

Step 2- Using Phillips screwdriver, re-install two (2) block screws.

Step 3- Re-install foam block above the fixed sash.



8

RE-INSTALL FOOTLOCK

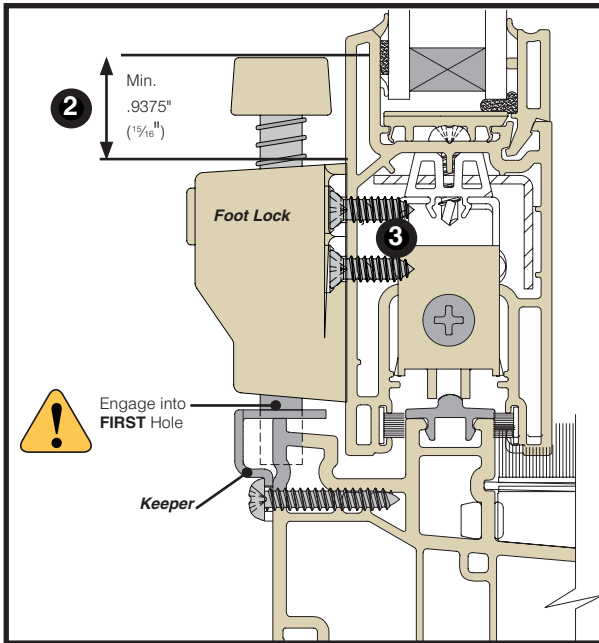
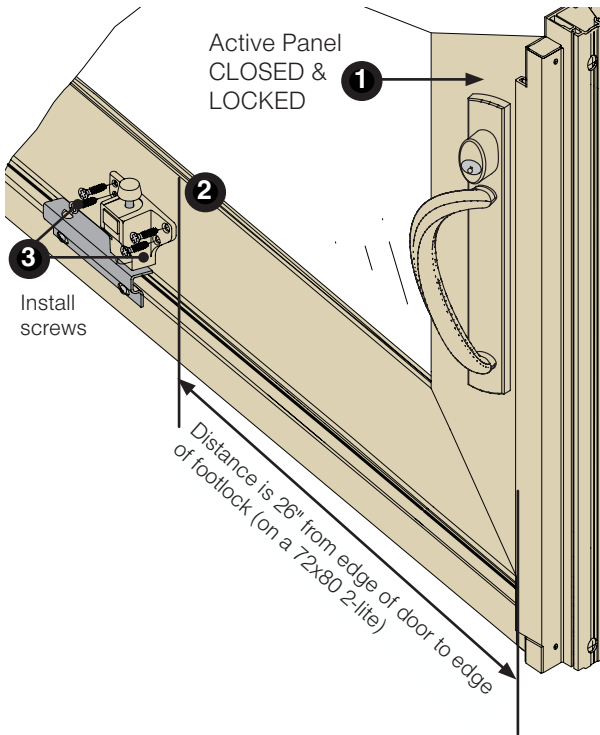
Step 1- Make sure active sash is in closed and locked position.



Important! Before drilling for foot lock into active sash, visually locate position so foot lock will sit directly above keeper and will engage into first hole (closest to jamb).

Step 2- Place foot lock onto horizontal rail on active sash, making sure height is at a min. of .9375 (15/16").

Step 3- Once height has been established correctly, attach using four (4) #10 x 5/8" Phillips Flathead screws.



9

INSTALL ACCUVENT BOLT PLATE

Follow instructions included inside the AccuVent Bolt Plate Kit to complete installation.

