

VINYL ARCHITECTURAL SHAPES INSTALLATION INSTRUCTIONS

Tools & Materials You Will Need:

- Drill & Drill bits: $\frac{1}{8}$ " , $\frac{3}{8}$ "

Installation Screwpack Contents:

- (4-8) #8 x 2" Phillips Panhead Screws (4 for units 24" - 30" wide and 8 for units over 30" wide)
- (4-8) $\frac{3}{8}$ " Color Matched Hole Plugs (4 for units 24" - 30" wide and 8 for units over 30" wide)

REMEMBER: ALWAYS USE THE APPROPRIATE PERSONAL PROTECTIVE EQUIPMENT.



Homes built before 1978 may contain lead paint. All replacement installations must comply with the U.S. EPA's Lead-Based Paint Renovation, Repair, and Painting Program (RRP Rule). Read more about the RRP Rule and lead-safe work practices, on the U.S. EPA's website at: www.epa.gov/lead

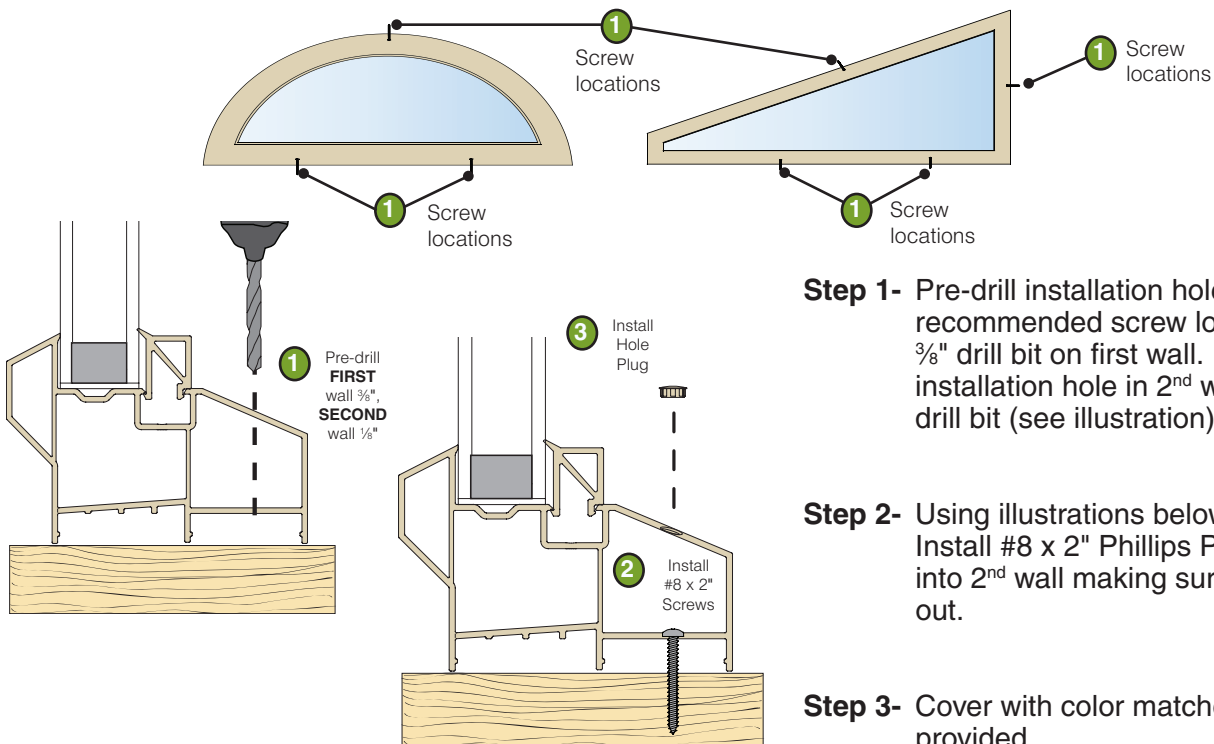


Contact your local recycling waste management center for waste disposal in your area. Always check local waste requirements and carefully dispose of waste in accordance with Federal and other regulations.

INSTALLING VINYL SHAPES



Recommended installation screw locations at every 12" distance on sill, sides and/or header.



Version 1.1 - 02.08.16 - © 2016 ProVia - S-MK-30202