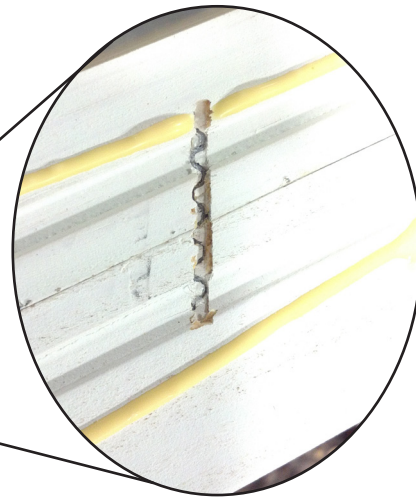
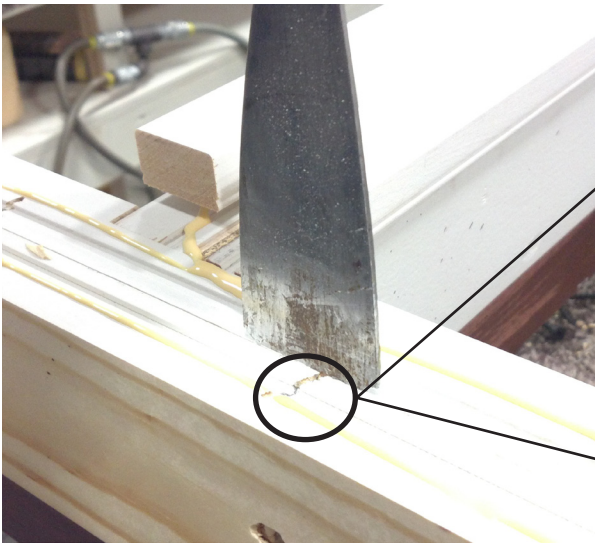


# Removing a Transom



Remove the transom mullion. Transom mullion is applied with finishing nails. Will have to pry up and remove carefully.



Using a chisel or sharp putty knife and a hammer, you must break through the corrugated fasteners.



Remove 6-7 screws located on the bottom of the transom frame, connecting it to the door frame.

Note: To reveal screws, cladding may need to be removed by using a sharp utility knife.