



# INSTALLATION INSTRUCTION MANUAL

## **PRE-HUNG SINGLE STORM DOOR**

(SPECTRUM™, DECORATOR™, DELUXE™, DURAGUARD™, AND SUPERVIEW™)



*\* Find QR Codes inside for additional information, helpful installation tips, and videos.*

*\* Find QR Code on back for SPANISH version of this instruction.*

*(Para obtener la versión en ESPAÑOL, escanee el código QR ubicado en la última página de estas instrucciones.)*



Contact the local recycling waste management center for waste disposal in the area. Always check local waste requirements and carefully dispose of waste in accordance with Federal and other regulations.



Homes built before 1978 may contain lead paint. All replacement installations must comply with the U.S. EPA's Lead-Based Paint Renovation, Repair, and Painting Program (RRP Rule). Read more about the RRP Rule and lead-safe work practices, on the U.S. EPA's website at: [www.epa.gov/lead](http://www.epa.gov/lead)



# GETTING STARTED

## TOOLS & MATERIALS YOU WILL NEED

- |                      |                 |                                       |
|----------------------|-----------------|---------------------------------------|
| • Tape Measure       | • Utility Knife | • Hammer                              |
| • Pencil             | • Hacksaw       | • Soft Mallet                         |
| • Shims              | • Square        | • Pliers                              |
| • Drill & Drill Bits | • Level         | • Phillips and Flat Head Screwdrivers |



This document is to assist with the preparation and installation of ALL ProVia® Spectrum™, Decorator™, Deluxe™, Duraguard™, and Superview™ models. Please scan the QR code on the back of this guide to see the 'Storm Door Manual: Operation and Maintenance' for more information on the operation of all models, including instruction for sash and screen inserts.



**REMEMBER: ALWAYS USE THE APPROPRIATE PERSONAL PROTECTIVE EQUIPMENT.**



*Read these instructions carefully before starting installation. Product warranty does not cover damages resulting from improper installation.*



## IMPORTANT NOTES BEFORE YOU BEGIN

- Inspect your package for any visible damages to the product. In addition, double check your paperwork with label on product(s) and verify all information is a match. Open packaging to confirm style, color and that order was shipped complete. Double check size of new unit by comparing it for fit to opening.
- If damages or irregularities are found, please scan the product's packaging QR Code label using your phone's QR Code Scanner to access ProVia's **After Sale Product Support** to enter a request and post pictures/videos to the order, or you can call the Customer Service Team at 1-800-669-4711.
- If you have ordered optional items, verify that they are included in packaging contents. This includes checking for multiple packages (For example, 1 of 2 and 2 of 2).



# PRE-HUNG SINGLE STORM DOOR CONTENTS

**NOTE:** Please refer to information below for assembly and installation contents. Installation screw packs listed below are the same for all Spectrum™, Decorator™, Deluxe™, DuraGuard™, and Superview™ models.

## Assembly Components (as shipped from factory)

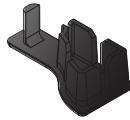
Storm door slab will ship from factory with header, hinge-side, and latch-side z-bars attached to slab.

Bottom expander will ship attached to bottom of slab. (Not secured)

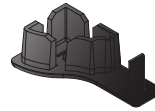
Screw cap covers inside main door carton, located and taped behind strike-side z-bar.

Handle set boxed separately and located inside main door carton.

Closer, touch-up paint, install packs (see below), sweeps, sash clips (where applicable), and LH & RH Z-bar header plugs boxed together and located inside main door carton.



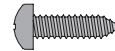
LH Z-Bar Plug,  
Part #: S-HG-750-13



RH Z-Bar Plug,  
Part #: S-HG-751-13

## Bottom Expander Screw Pack S-DH-514S-CC

(2) #6 x 1/2" Phillips Pan Head Screws, Part #: S-HS-783-CC



## HINGE SCREW PACKS

*Depending on hinge type ordered, (1) of the following screw packs will be included.*

## Pre-Hung Cont. Hinge Pack (Piano Hinge) S-DH-501S

Exterior Face Screw:  
(14) #6 x 1" Phillips Pan Head Screws, Part #: S-HS-738-00



Hinge Screw:  
(12) #8 x 1 1/2" Phillips Truss Screws, Part #: S-HS-949S-00



OR

## Pre-Hung Leaf Hinge Pack S-DH-502S

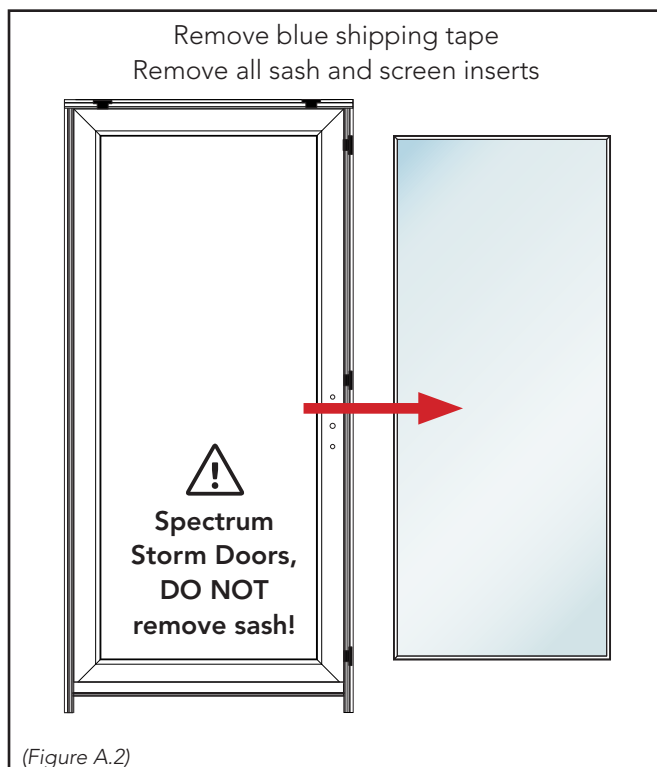
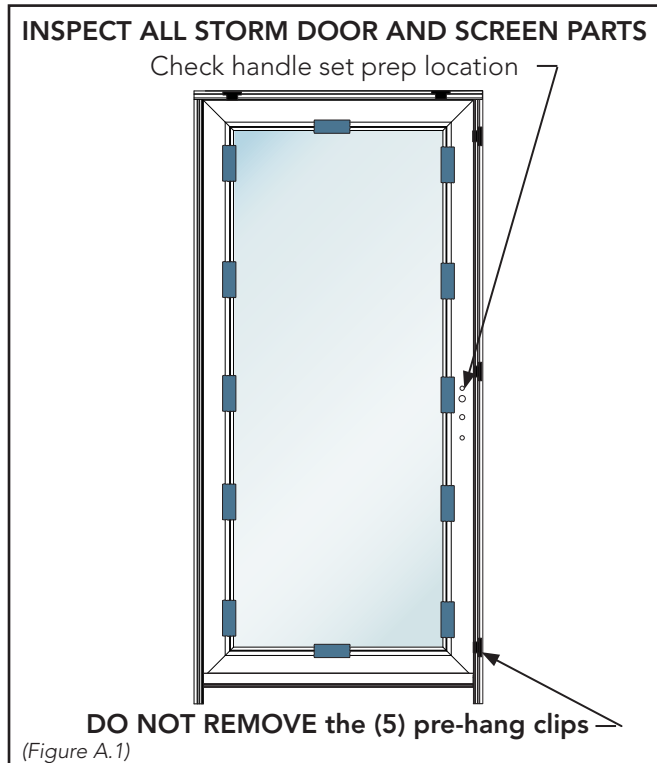
Exterior Face Screw:  
(14) #6 x 1" Phillips Pan Head Screws, Part #: S-HS-738-00



Hinge Screw:  
(8) #7 x 1" Phillips Pan Head Screws, Part #: S-HS-097-00



# A. INSPECT



**! IMPORTANT!** For all *Decorator™, Deluxe™, DuraGuard™, and Superview™ (with the exception of self-storing and all Spectrum™) storm doors will ship with sash(es) and screen insert(s) mounted in door slab, secured with blue shipping tape.*

- 1 Confirm existing opening will accommodate new storm door. Z-bars will be mounted to the existing opening trim. Trim **MUST BE** fully secured to the structure. Prepare and secure as necessary.
- 2 Carefully lay door unit onto a protected flat surface (i.e. saw horses) with interior side up, as noted on product box.
- 3 Unpack and inspect new storm door for any material damages. Check glass, screen, and moving parts; locks and all operational hardware. **NOTE:** Moving parts can be repaired AFTER window is installed. Scan the product packaging QR Code label to access ProVia's **After Sale Product Support** to enter a request and post pictures to order, or call Customer Service.

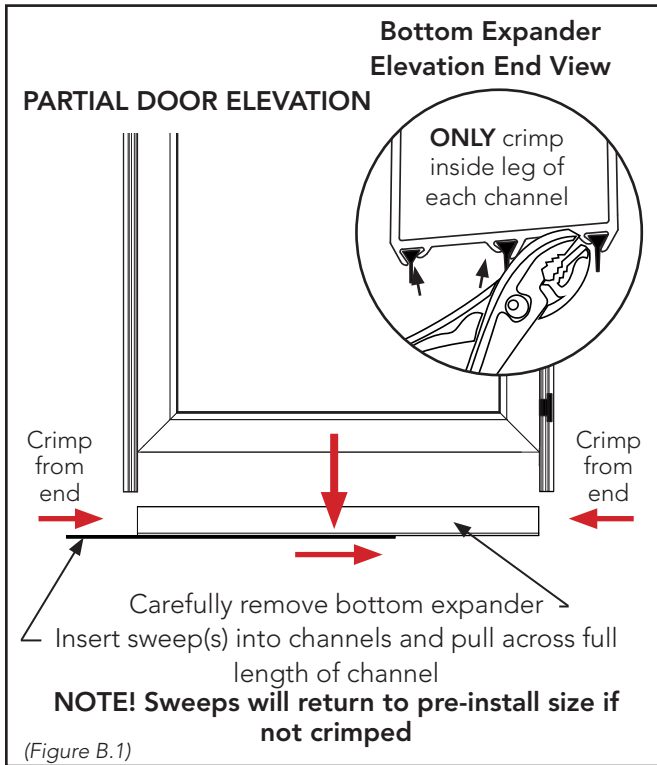
**! IMPORTANT!** **DO NOT REMOVE PRE-HANG CLIPS until instructed.**

- 4 **BE SURE TO CHECK!** If storm door was ordered with handle set prep, double check prep location. Check to be sure storm door handle set will not interfere with entry door handle set before storm door installation. (Figure A.1)
- 5 For all storm doors, **EXCEPT** Spectrum models, remove blue shipping tape. Then remove all sash and screen inserts. Carefully set aside until after storm door installation. (Fig. A.2)

**NOTE:** For *Deluxe™, DuraGuard™, and Superview™*, sash clips are located in hardware box for sash installation later in this instruction.

- 6 Wipe door slab down with a soft cloth to remove any metal burrs.

# B. PREPARATION

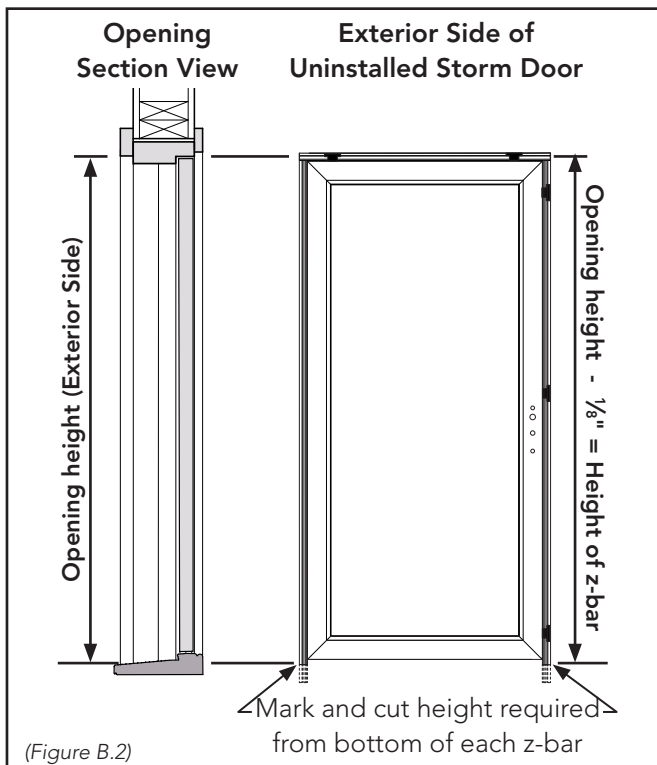


1 Remove bottom expander from door slab. Be sure to remove foam shipping blocks located inside expander. Insert vinyl sweep(s) into channel(s) on bottom side of expander. Pull sweep across the full length of channel. **BE SURE** to **NOT** stretch sweep before proceeding to next step. *NOTE: Vinyl sweep(s) are packaged in hardware kit for shipping. (Figure B.1)*

- **Spectrum™ and Decorator™:**  
Locate sweeps in all channels.
- **Deluxe™, DuraGuard™, and SuperView™:**  
Select and locate sweep(s) in the channel(s) which provides the best contact with threshold.

2 From each end of the bottom expander, crimp **ONLY** the **INSIDE** leg of each channel closed to secure sweep in place. Refer to Detail in (Figure B.1).

**! IMPORTANT! BE SURE all screw cap covers are removed from behind z-bar before continuing.**



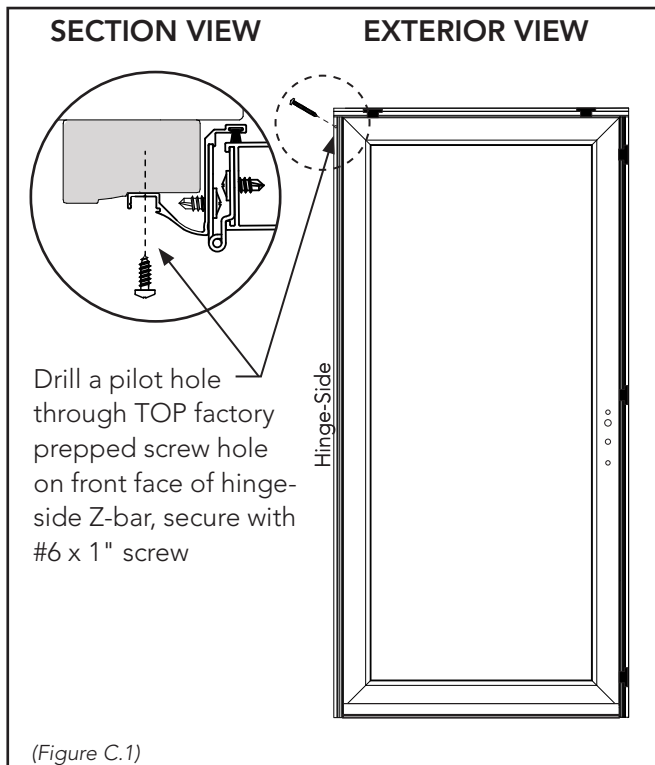
3 Measure opening height of each jamb side from top of opening to threshold. **Subtract 1/8" from each measurement.** Using this measurement, measure and mark hinge and latch-side z-bar from top of unit down. Cut hinge and latch-side z-bars to length required. Angle cut to match threshold slope if possible. (Figure B.2)

**Opening height - 1/8" = Height of z-bar**

**NOTE:** For standard z-bar with 1/4" build-out (Eastern), drill 1/8" holes through spacer located on back of each z-bar using factory pre-drilled installation holes as a guide.

4 Re-locate bottom expander onto door slab, position bottom edge of sweeps even with bottom of z-bars. Be sure bottom expander is sloped in the same direction as the threshold. **DO NOT SECURE WITH SCREWS.** Screws will be installed after final adjustments.

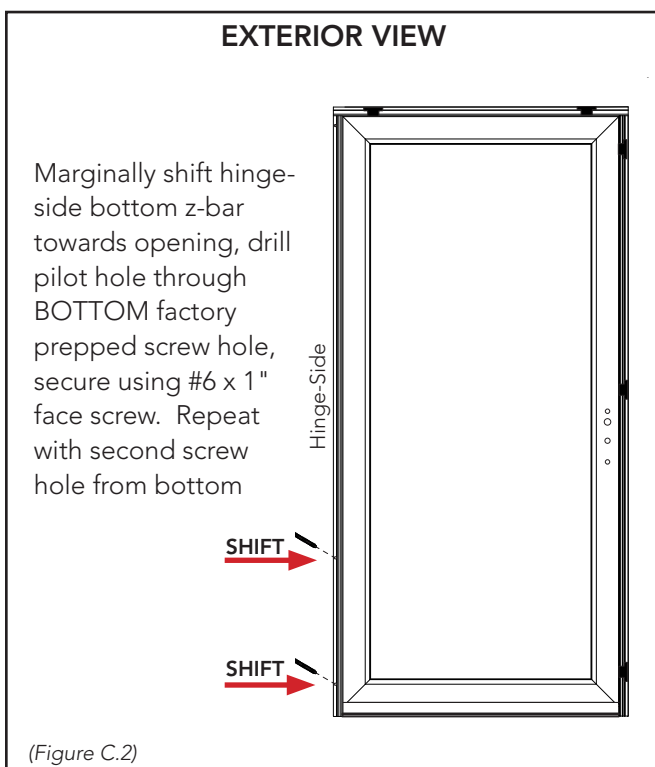
# C. INSTALLATION



## IMPORTANT INSTALLATION GUIDELINES!

- For installation of all face mounted #6 x 1" pan head screws, center each screw directly on score line located within the z-bar screw cover channel.
- DO NOT install the exterior screw covers until storm door installation is complete.
- It is CRITICAL throughout the installation of this storm door to NOT OVER TIGHTEN SCREWS. Doing so can cause z-bar to roll, twist, or bind.

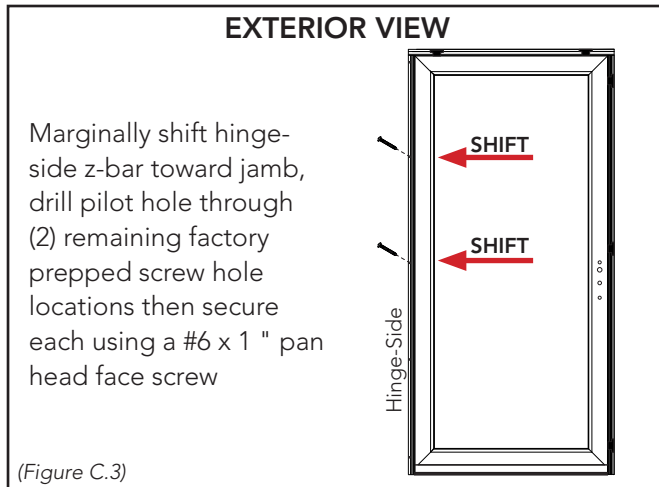
- 1 Position storm door into opening, sill first. Center within opening.
- 2 With door positioned in place, drill a  $\frac{3}{32}$ " pilot hole into the brickmold or trim board through the TOP factory prepped screw hole on front face of hinge-side Z-bar. Secure using a #6 x 1" pan head face screw. Re-check the position of door in the opening. (Figure C.1)



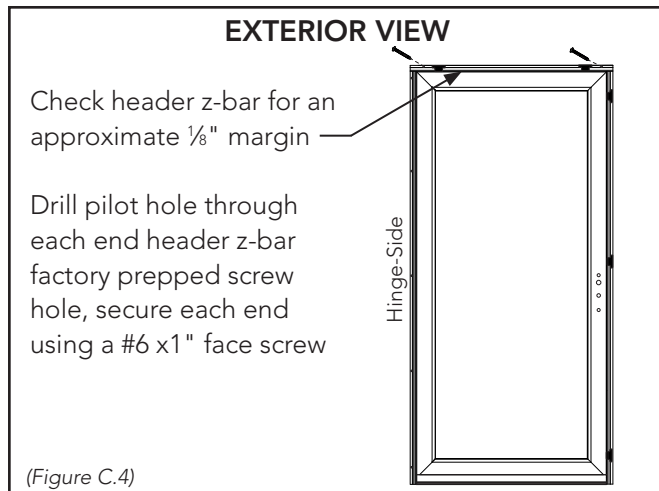
**IMPORTANT!** The following (3) steps instruct for a marginal shift of the hinge-side z-bar. These steps will elevate the strike-side to counteract hinge-drop and door drag after the pre-hang clips are removed and sash(es) are re-installed, loading door slab to full weight.

- 3 Marginally shift bottom of hinge-side z-bar AWAY from hinge-side jamb. Drill a  $\frac{3}{32}$ " pilot hole through the BOTTOM hinge-side z-bar factory prepped screw hole. Secure using (1) #6 x 1" pan head face screw. (Figure C.2)
- 4 At the second screw hole location from the bottom, marginally shift hinge-side z-bar AWAY from the hinge-side jamb to establish screw location. Drill a  $\frac{3}{32}$ " pilot hole through the factory prepped screw hole. Secure using (1) #6 x 1" pan head face screw. (Figure C.2)

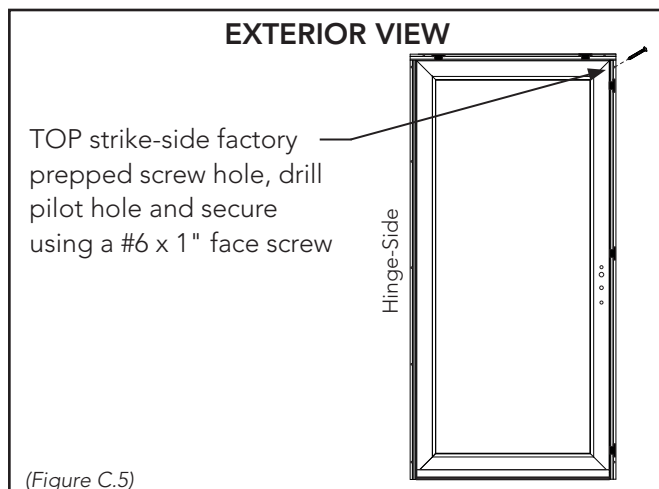
# C. INSTALLATION (CONTINUED)



- 5 Marginally shift upper hinge-side z-bar TOWARD hinge-side jamb to establish screw locations. Drill a  $\frac{3}{32}$ " pilot hole through the (2) remaining factory prepped screw hole locations of hinge-side z-bar. Secure using a #6 x 1" pan head face screw in each location. (Figure C.3)

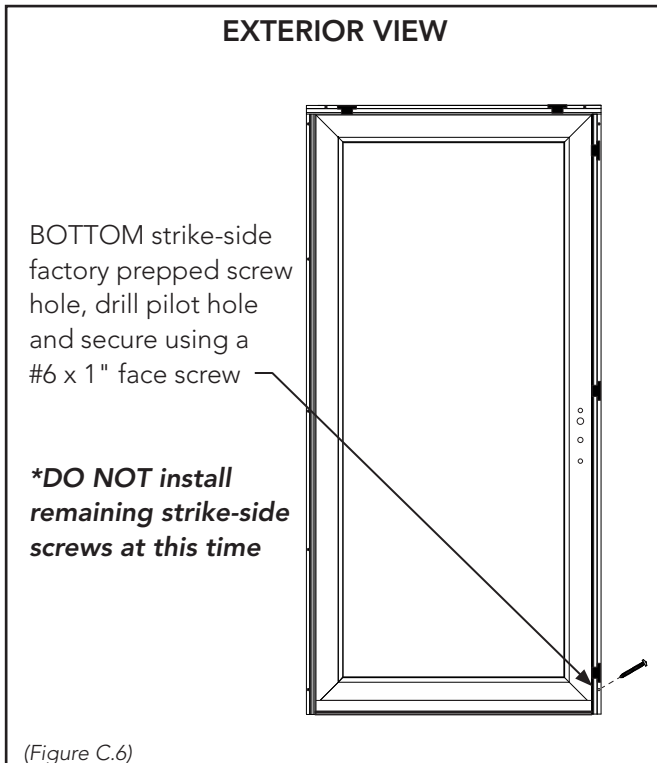


- 6 Check header z-bar for an approximate  $\frac{1}{8}$ " margin between z-bar header and door slab. Drill a  $\frac{3}{32}$ " pilot hole into the brickmold or trim board through each end header z-bar factory prepped screw hole location. Secure each end using a #6 x 1" pan head face screw. (Figure C.4)



- 7 At TOP strike-side factory prepped screw hole, drill a  $\frac{3}{32}$ " pilot hole. Secure using a #6 x 1" pan head face screw. (Figure C.5)

# C. INSTALLATION (CONTINUED)



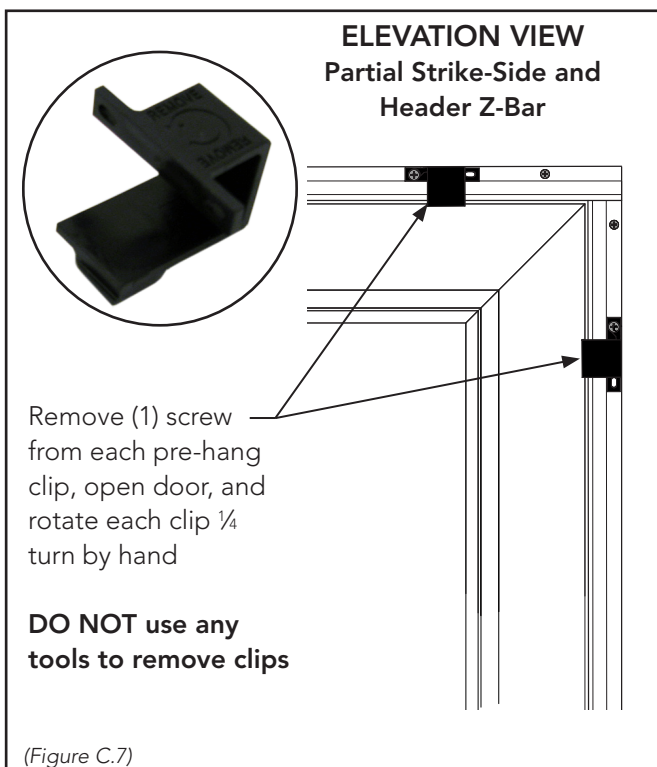
- 8 At BOTTOM strike-side factory prepped screw hole, drill a  $\frac{3}{32}$ " pilot hole. Secure using a #6 x 1" pan head face screw. (Figure C.6)

**! IMPORTANT! DO NOT install remaining strike-side face screws until after the hinge-side z-bar installation is complete.**

- 9 Remove (1) #8 x  $\frac{1}{4}$ " pan head screw from each pre-hang clip/bracket. Open door to remove each pre-hang clip/bracket by rotating counter clockwise, by hand, then dispose. If door has mortise hardware, use a wide flathead screwdriver or the hardware spindle with handle to release the latch before opening. (Figure C.7)

**NOTE: DO NOT** use any tools to remove the pre-hang clips. Doing so may cause damage to the door slab.

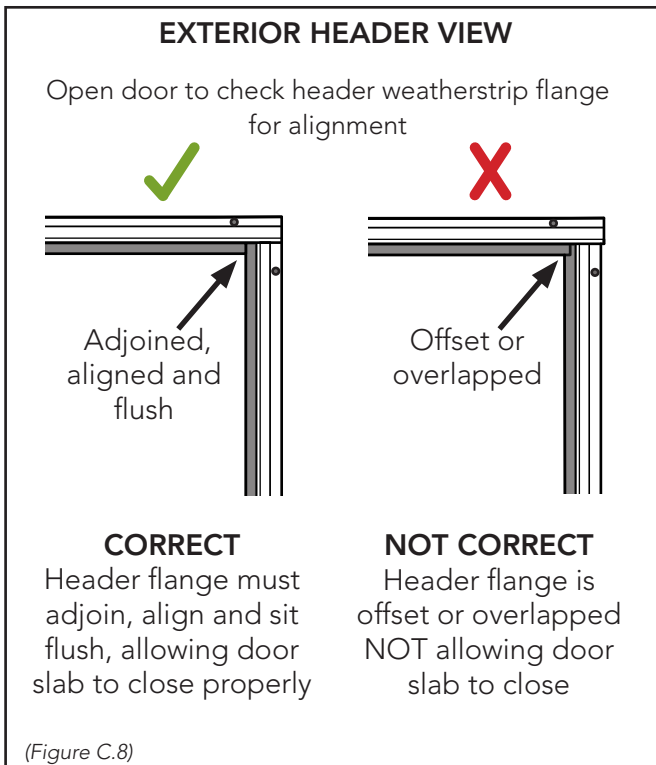
**NOTE:** Pre-hang clips **DO NOT** set final door margins.



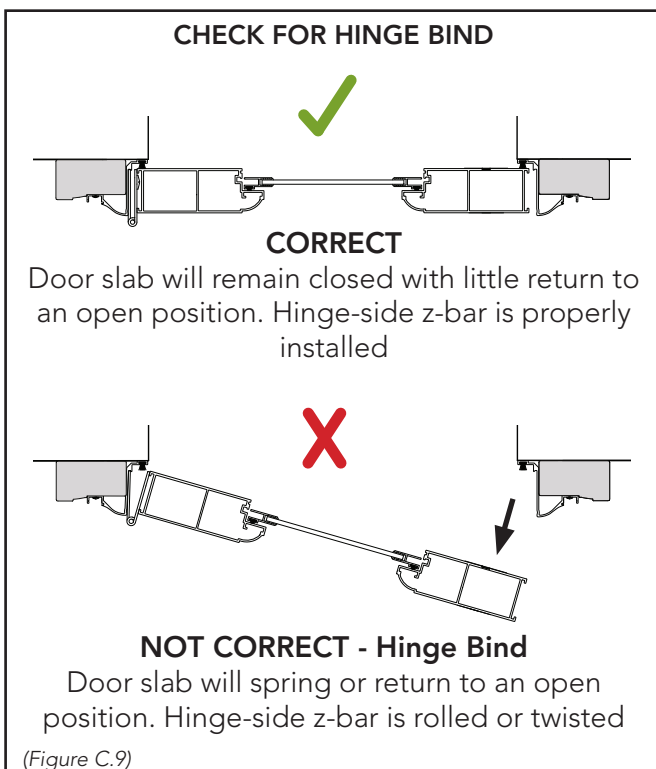
- 10 For storm doors ordered with mortise hardware, install at this time. This will allow for easier operation of the door slab and for strike plate adjustment. See manufacturer's included instruction.



# C. INSTALLATION (CONTINUED)

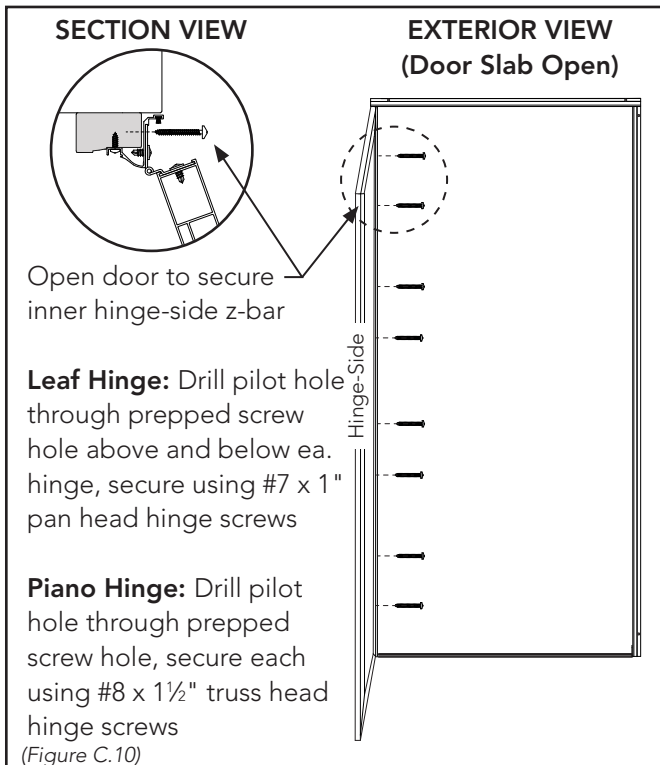


- 11** Open door to check the alignment of header weatherstrip flange with each jamb-side weatherstrip flange. Header flange **MUST** adjoin, align and sit flush to the adjacent flange. If header flange is offset, use a soft mallet to gently seat the z-bar back against the exterior trim. If the weatherstrip flange is overlapping, remove installation screws as needed to adjust z-bars until properly adjoined. (Figure C.8)



- 12** **Close door to check for hinge bind.** If door gently springs open approximately 3 - 4", the hinge-side face screws are installed over tight, causing frame to roll away from the opening. Loosen all hinge-side face screws and re-adjust z-bar. The hinge screws may need loosened as well. (Figure C.9)
- NOTE:** Hinge bind **MUST BE** monitored and corrected before continuing with the installation in order to avoid additional operational errors such as the handle set not latching and closer not fully functioning.

# C. INSTALLATION (CONTINUED)

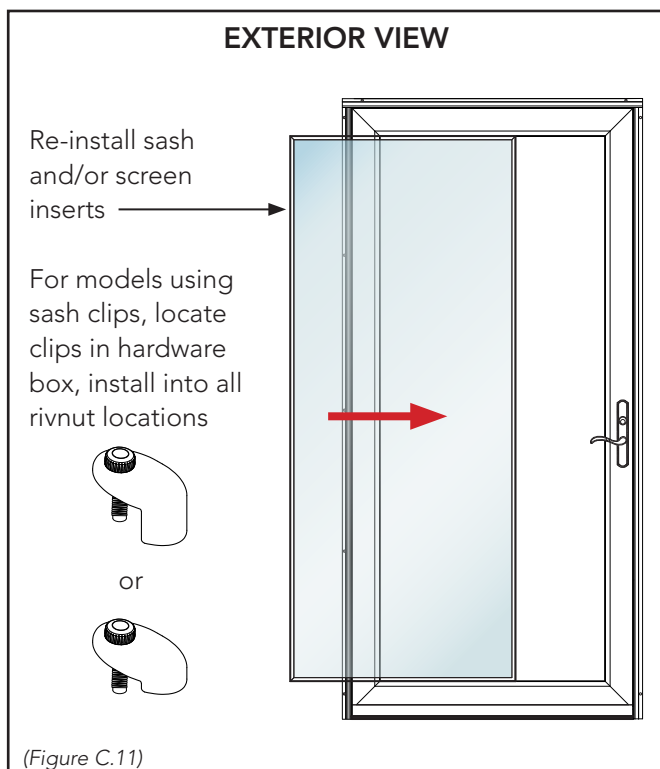


**! REMEMBER! DO NOT OVER TIGHTEN SCREWS.** Doing so can cause z-bar to roll, twist, or bind thus pulling the weatherstrip away from the door slab surface, allowing light and air infiltration.

- **ONLY** tighten hinge screws until screw head lightly contacts z-bar, especially if z-bar is not tight against exterior brickmold or trim.

**13** Open door slab to secure the inner hinge-side z-bar to the brickmold or trim board. (Figure C.10)

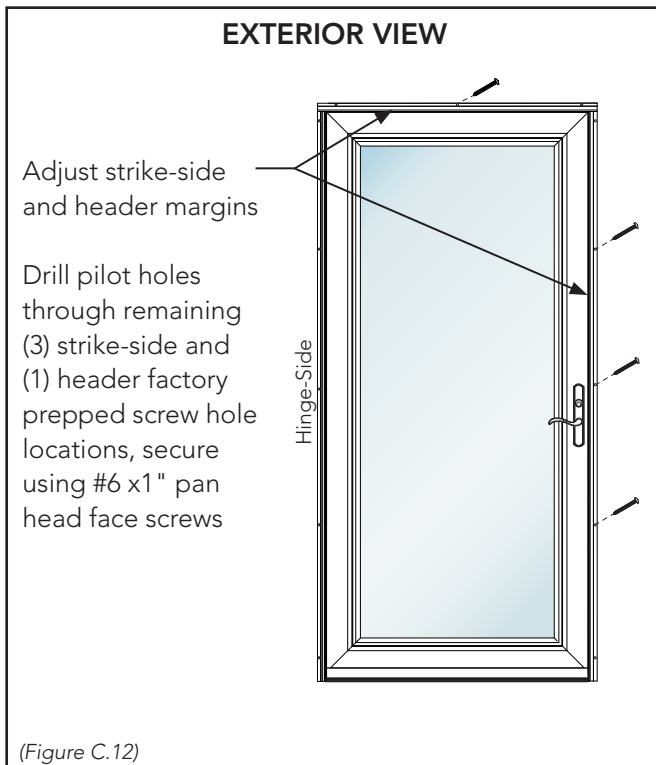
- **Leaf Hinge:** Drill a ⅜" pilot hole through each leaf hinge factory prepped screw hole and into the wood trim, above and below each hinge. (8) total. Secure each using #7 x 1" pan head hinge screws.
- **Piano Hinge:** Drill a ¼" pilot hole through each piano hinge factory prepped screw hole, through aluminum z-bar, and into the wood trim. (12) total. Secure each using #8 x 1½" truss head hinge screws.



**14** Re-install sash and/or screen insert(s) before continuing to secure the z-bars. Returning door slab to full weight will allow for header and latch-side margin adjustment. For storm doors using the sash clips to secure sash/screen, locate clips in the hardware box then install into all rivnut locations. (Figure C.11)

**NOTE:** If sash clip will not install due to a loose rivnut, call Customer Service for replacement. A rivnut tool kit, part # S-ST-9633, will be sent for the repair.

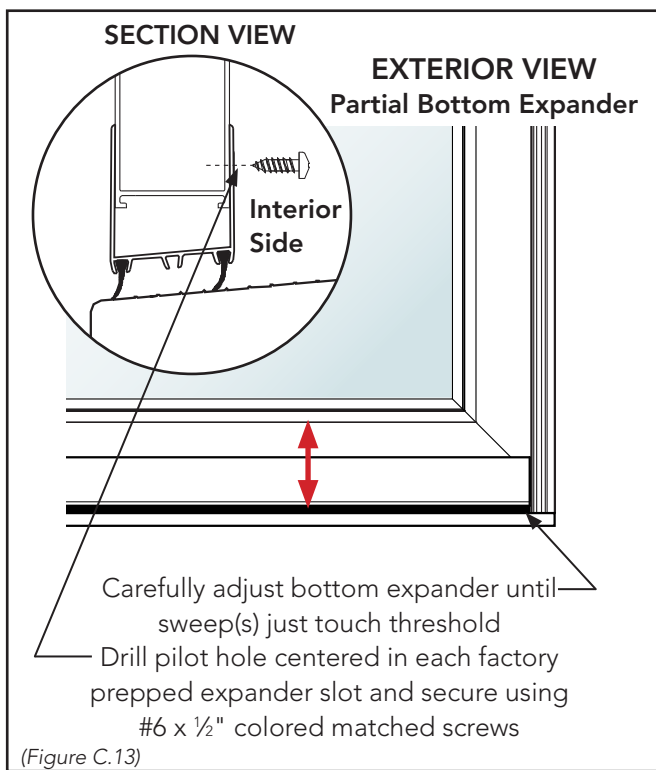
# C. INSTALLATION (CONTINUED)



**15** With door closed, adjust strike-side and header margins as noted below. With margins aligned, drill a  $\frac{3}{32}$ " pilot hole through remaining (3) latch-side and (1) header factory prepped screw hole locations. Secure using #6 x 1" pan head face screws. (Figure C.12)

- **Door with face-mounted hardware:** strike-side margin will be approximately  $\frac{1}{8}$ ".
- **Door with mortise hardware:** strike-side margin should be approximately  $\frac{3}{16}$ ".

**NOTE:** Previously installed exterior face screws can be relocated as needed to create proper margins. Screw cap covers will be installed in a later procedure to cover any open screw hole locations.



**16** Carefully adjust the bottom expander on door slab until sweep(s) just touch the threshold. Drill a  $\frac{7}{64}$ " pilot hole centered in each factory prepped expander slot. Secure using a #6 x  $\frac{1}{2}$ " color matched screw in each slot. (Figure C.13)

# D. INSTALL HANDLE SET, CLOSER, SCREW COVERS, AND PLUGS



**IMPORTANT!** DO NOT USE a power tool to install handle set hardware. Doing so can cause damage and void warranty. DO NOT OVER TIGHTEN SCREWS.

1

Install handle set:

- **Door with factory handle set prep:** Follow manufacturer's instruction (included) to install the surface mounted handle set, deadbolt, and strike plate. Holes are factory drilled, template not required. For deadbolt installation, (2) shims are supplied for under the interior deadbolt. Shims provide space for the 90° strike plate attachment point.
- **Door without factory handle set prep:** Follow manufacturer's full instruction (included) to install the surface mounted handle set, deadbolt, and strike plate. The template **MUST** be used to locate and drill all holes. For deadbolt installation, (2) shims are supplied for under the interior deadbolt. Shims provide space for the 90° strike plate attachment point.
- **Door with mortise hardware:** Lock body and strike plate are factory installed. Follow manufacturer's instruction (included) to install handle set.

**NOTE: DO NOT** install or adjust strike plate so the door latches too tightly. A properly located strike plate will allow for some movement in the door when in the closed and latched position.

**NOTE:** Installation conditions may require the factory prepped handle set holes to be slightly adjusted accordingly.

Multi-Point Mortise  
Handle Set Installation  
Instruction



Single-Point Mortise  
Handle Set Installation  
Instruction



Windsor Handle Set  
Installation Instruction  
With Template



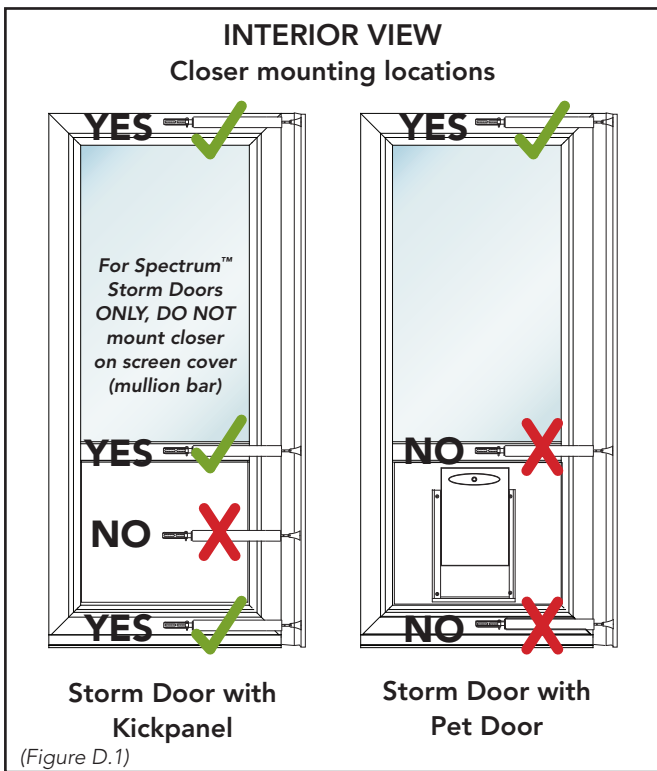
Townsend Handle Set  
Installation Instruction  
With Template



Contemporary Curve Handle  
Set Installation Instruction  
With Template



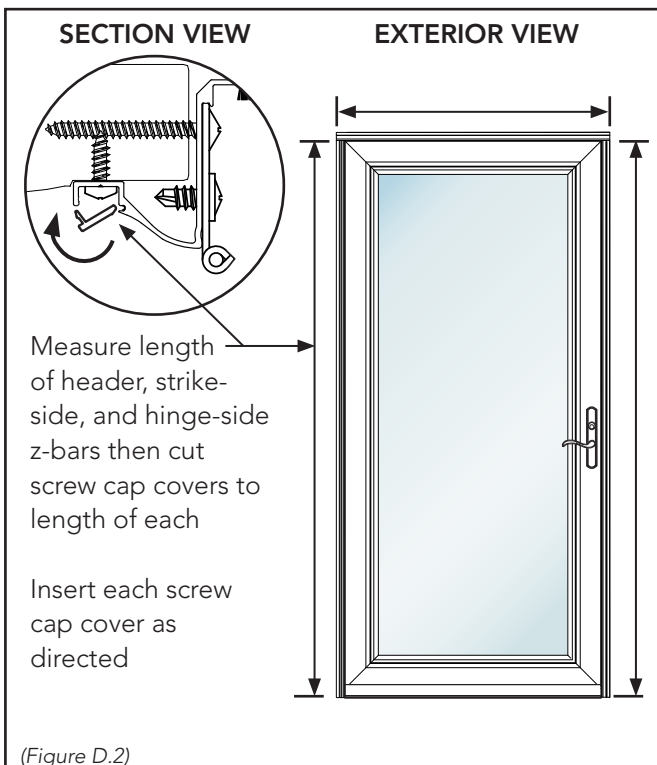
# D. INSTALL HANDLE SET, CLOSER, SCREW COVERS, AND PLUGS (CONTINUED)



- 2 Install closer. Determine mounting location. (See Figure for correct mounting locations.) **DO NOT mount closer on kickpanel. DO NOT mount closer above or below a pet door. For Spectrum™ ONLY, DO NOT MOUNT CLOSER ON SCREEN COVER(S).** Follow manufacturer's instruction (included) to install the closer. Use the black pre-load clip located on closer piston as indicated in the manufacturer's instruction for best results. Closer should be set on the 'Winter' setting for installation. (Figure D.1)

**Recommendation:** ProVia® strongly recommends the installation of the closer storm chain as instructed on the back of the manufacturer's closer installation instruction.

**NOTE:** Refer to the QR Code at the end of this instruction for a helpful video on storm door closer installation and adjustments.



- 3 Install screw cap covers. **Before installing, BE SURE adjustments are FINAL and door is working properly.** Measure header, latch-side and hinge-side z-bars. Cut each screw cap cover to length required. Insert the chamfered edge into the door side of the z-bar screw cover channel. Use a soft mallet to embed the screw cover's snap leg into the opposite edge of the z-bar cover channel. (Figure D.2)

**NOTE:** If daylight is visible between bottom of z-bar and threshold, apply opaque caulking to seal off the exposed daylight.

- 4 In each open end of header Z-bar, insert corresponding Z-bar plug (included). Plugs are labeled 'L' or 'R' for handing. *If plug feels loose, a small bead of adhesive or sealant can be used when installing.*

**NOTE:** Z-bar header plugs can not be used with Slimline™ Z-bar applications.



# TROUBLESHOOTING & TIPS

PROBLEM	CAUSE	SOLUTION
Door will not close	<ol style="list-style-type: none"> <li>1. Header weatherstrip flange needs aligned.</li> <li>2. Air pressure between primary door and storm door (air is trapped).</li> <li>3. Closer speed needs adjusted.</li> <li>4. Hinge bind due to z-bar installed improperly.</li> </ol>	<ol style="list-style-type: none"> <li>1. Refer to Step 10 from Section C. Tap header z-bar until weatherstrip flange is aligned with jamb weatherstrip flange.</li> <li>2. Slightly raise bottom expander until sweep(s) just touch the threshold.</li> <li>3. Refer to closer instruction for adjustments.</li> <li>4. Loosen installation screws to properly position z-bar to avoid binding.</li> </ol>
Hinge-side of door is binding	<ol style="list-style-type: none"> <li>1. Face screws are too tight.</li> <li>2. Opening or the z-bars are out of square.</li> <li>3. Bottom expander is dragging.</li> <li>4. Piano hinge is not plumb with jamb.</li> <li>5. Header weatherstrip flange needs aligned.</li> </ol>	<ol style="list-style-type: none"> <li>1. Back off face screws ¼ of a turn.</li> <li>2. Loosen screws and re-adjust position of z-bars. Shims may be needed behind z-bars.</li> <li>3. Slightly raise bottom expander until sweep(s) just touch the threshold.</li> <li>4. Place a putty knife between hinge and jamb. Slightly turn knife towards door slab to remove any bind in piano hinge.</li> <li>5. Refer to Step 10 from Section C. Tap header z-bar until weatherstrip flange is aligned with jamb weatherstrip flange.</li> </ol>
Door will not latch	<ol style="list-style-type: none"> <li>1. Handle set will not engage with strike plate</li> <li>2. Z-bars are out of square.</li> </ol>	<ol style="list-style-type: none"> <li>1. Remove strike plate, add (2) shims (included) to plate, and reinstall.</li> <li>2. Loosen screws and re-adjust position of z-bars. Shims may be needed behind z-bars.</li> </ol>
Storm door is squeaking	<ol style="list-style-type: none"> <li>1. Hinge-side jamb screws are too tight.</li> <li>2. New hinge is tight.</li> <li>3. Hinge-side z-bar is not straight causing undue pressure on hinges.</li> </ol>	<ol style="list-style-type: none"> <li>1. Back off screws ¼ of a turn.</li> <li>2. Spray hinge with a silicone lubricant.</li> <li>3. Loosen screws and re-adjust position of z-bars to achieve equal and straight margins.</li> </ol>
Header z-bar top margin is wider on strike-side	Hinge drop.	Remove strike-side z-bar. Cut the margin difference from the bottom of the z-bar then relocate on the opening. Loosen header z-bar screws and re-adjust position for equal and straight margin.
Door slab is contacting top strike side z-bar corner	Brickmold or trim is not properly secured to structure.	Properly secure to structure as required. Z-bars may need to be removed in order to secure trim.



# TROUBLESHOOTING & TIPS

*\*Please call Customer Service for additional installation inquiries at 1-800-669-4711.*

*\*For additional information and helpful videos, visit our Homepage for Installers.  
SCAN OR TAP the QR Code.*



**Critical Steps:  
Pre-Hung Storm Door  
Installation Video**



**Storm Door Closer  
Installation and  
Adjustment Video**



**Closer Installation  
(Manufacturer's  
Instruction)**



**Mortise Strike Plate  
Adjustment**



**Replacing Storm  
Door Key Cylinder  
Instruction**



**Condensation,  
Humidity, Dew Pt  
Flyer**



**Spectrum Balancer  
Replacement  
Instruction Video**



**Spectrum Screen  
Replacement  
Instruction Video**



**Storm Door User Manual: Operation & Maintenance  
For All Series & Models**



**Para la versión en ESPAÑOL, escanee el Código QR:  
Instrucciones para la Instalación de Puertas Individuales de Tormenta Pre  
Ensambladas (Spectrum™, Decorator™, Deluxe™, DuraGuard™, y SuperView™)**

