



# INSTRUCTIONS FOR REPLACING WEATHER-STRIPPING CORNER PAD ON ENTRY DOOR THRESHOLD

## Tools & Materials You Will Need:

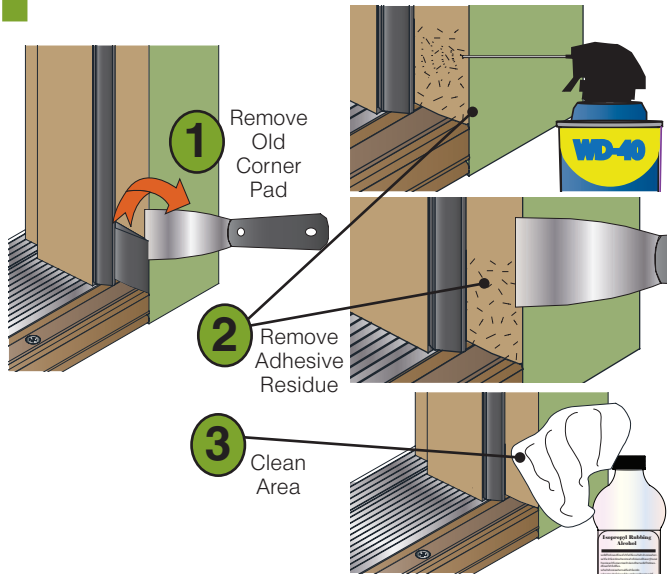
- Rubbing Alcohol
- Stiff Putty Knife
- Clean & Dry Cotton Cloth

## Materials Provided:

- (2) CornerShield™ Pads
- Instruction Sheet

**REMEMBER:** ALWAYS USE THE APPROPRIATE PERSONAL PROTECTIVE EQUIPMENT.

## 1 REMOVE EXISTING CORNER WEATHER-STRIPPING PAD



### Step 1-

Using a stiff putty knife, gently remove old weather-stripping corner pad and any adhesive residue.

### Step 2-

If you find it difficult to remove the adhesive residue, spray WD-40 on the old adhesive.



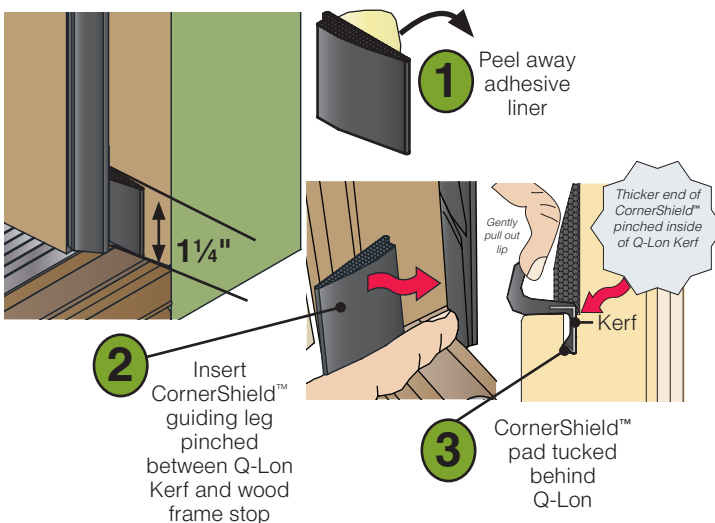
To prevent staining, make sure you wipe off any residual spray from the threshold, Q-Lon and surrounding areas.

Continue using the stiff putty knife to gently remove adhesive.

### Step 3-

Using a clean cotton cloth dabbed with isopropyl rubbing alcohol, clean the area and allow to air dry.

## 2 INSTALL NEW CORNERSHIELD™ WEATHER-STRIPPING PAD



### Step 1-

Peel back adhesive liner on back of new closed-cell weather-stripping pad.

### Step 2-

Using your fingertip, locate the bottom portion of the Q-Lon weather-stripping and gently pull out the lip so that you have clearance to insert CornerShield™ pad.

### Step 3-

Press firmly and install CornerShield™ pad with the thicker end pinched all the way back inside the Q-Lon Kerf and the bottom edge down against the threshold riser.

Version 1.0 - 06.09.2011 - © 2011 ProVia - P-MK-61222