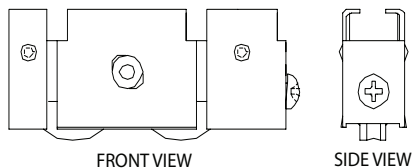


VINYL PATIO DOOR

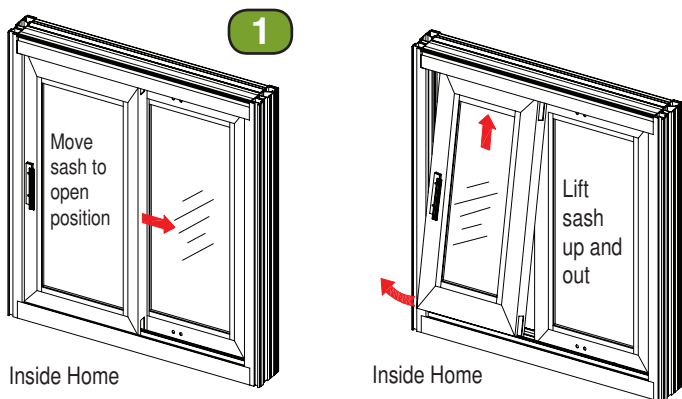
SASH ROLLER REPLACEMENT INSTRUCTIONS



Tools & Materials You Will Need:

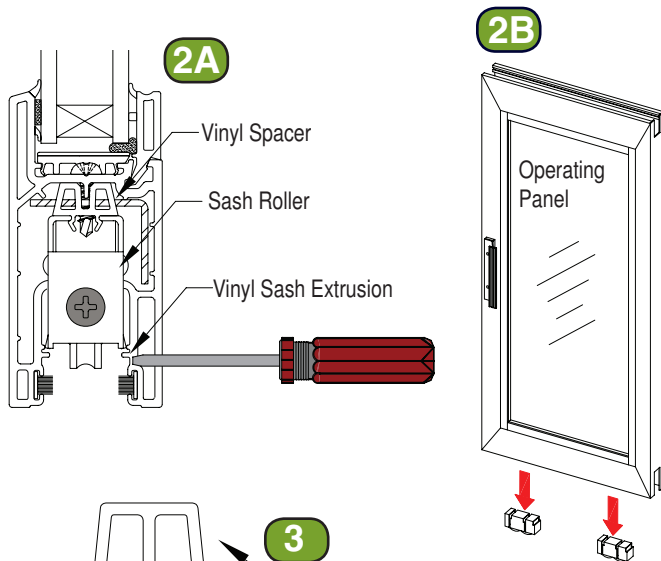
- Phillips & Flathead #2 Screwdrivers

REMEMBER: ALWAYS USE THE APPROPRIATE PERSONAL PROTECTIVE EQUIPMENT.



Step 1 REMOVE OPERATING PANEL

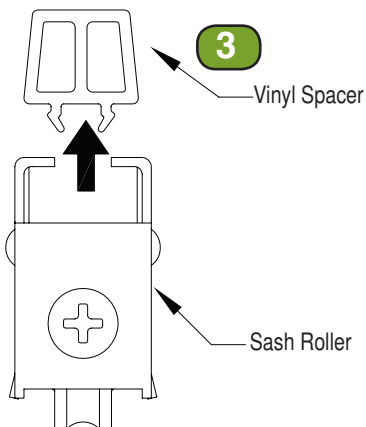
From inside the home, move operating panel to clear the jambs and lift operating panel upwards while tilting bottom of panel inwards.



Step 2 REMOVE EXISTING SASH ROLLER(S)

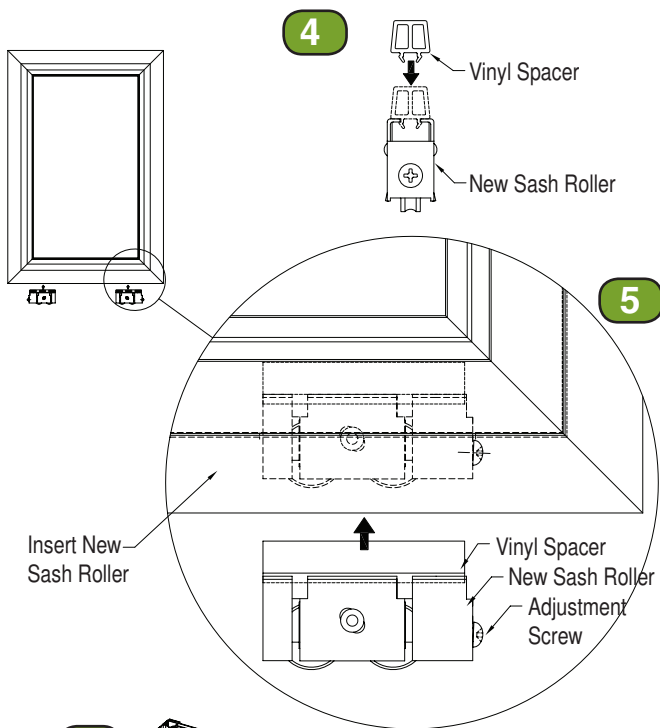
Using a flathead screwdriver, locate nubs at each vertical side of the roller and pry sash roller from sash extrusion.

Remove sash rollers from sash.



Step 3 REMOVE EXISTING VINYL SPACER(S)

Once sash rollers have been removed, remove vinyl spacer that is attached to top portion of sash roller.



Step 4 INSERT VINYL SPACER(S) ONTO NEW SASH ROLLER(S)

Take new sash roller and insert vinyl spacer back into cavity area on top of sash roller.

Step 5 INSERT NEW SASH ROLLER(S)

Insert new sash roller by snapping it back into bottom of operating sash panel (where extrusion nubs keep sash roller in place).

Step 6 RE-INSERT OPERATING PANEL

From the inside, insert top of operating panel into inside header track as illustrated. Make sure wheels of operating sash sit onto rolling track.

Please Note: Height adjustments can be made to sash rollers by using a phillips head screwdriver and loosening the screw counter clockwise (see drawing below).

